

KALAHARI COPPER BELT

MULTIPLE COPPER OCCURANCES ON
DISTRICT SCALE LANDHOLDING

Corporate Presentation November 2019

DISCLAIMER

Important Notice and Disclaimer

This Presentation has been prepared to provide information on the Kopore Metals Limited (Kopore), its Botswana subsidiaries and Botswana and Namibian projects. It is not intended as an offer, invitation solicitation or recommendation with respect to the purchase or sale of any securities. This Presentation should not be relied upon as the sole representation of any matter that a potential investor should consider in evaluating Kopore. Its affiliates or any of its directors, agents, officers or employees do not make any representation or warranty, express or implied, as to or endorsement of, the accuracy or completeness of any information, statements, representations or forecasts contained in this Presentation, and they do not accept any liability for any statement made in, or omitted from, this Presentation. Prospective investors should make their own independent evaluation of an investment in the Company.

Caution Regarding Forward Looking Information

This Presentation contains forward looking statements concerning Kopore. Forward-looking statements are not statements of historical fact and actual events and results may differ materially from those described in the forward looking statements as a result of a variety of risks, uncertainties and other factors. Forward-looking statements are inherently subject to business, economic, competitive, political and social uncertainties and contingencies. Many factors could cause the Company's actual results to differ materially from those expressed or implied in any forward-looking information provided by the Company, or on behalf of, the Company. Such factors include, among other things, risks relating to additional funding requirements, metal prices, exploration, development and operating risks, competition, production risks, regulatory restrictions, including environmental regulation and liability and potential title disputes. Forward looking statements in this Presentation are based on Kopore's beliefs, opinions and estimates of Kopore as of the dates the forward looking statements are made, and no obligation is assumed to update forward looking statements if these beliefs, opinions and estimates should change or to reflect other future developments.

Competent Persons Statement

The information in this Presentation that relates to exploration results is based on information compiled by Mr David Catterall, a Competent Person and a member of the South African Council for Natural Scientific Professions, a Recognised Professional Organisations (ROPO). David is engaged by Kopore as a consultant Exploration Manager. David Catterall has sufficient experience that is relevant to the style of mineralisation and type of deposit under consideration and to the activity being undertaken to qualify as a Competent Person as defined in the 2012 Edition of the Australasian Code for Reporting of Exploration Results, Mineral Resources and Ore Reserves (JORC 2012). David Catterall consents to the inclusion in the Presentation of the matters based on his information in the form and context in which it appears.

KOPORE METALS

Right Time, Right Address

EXTENSIVE LANDHOLDING ON THE KALAHARI COPPER BELT

covering 14,813km²

DISTRICT SCALE LAND POSITION

**COPPER/SILVER INTERCEPTED ON
FOOTWALL CONTACT**

NUMEROUS UNDER EXPLORED TARGETS

MULTIPLE COPPER OCCURRENCES

MOMENTUM ON THE KALAHARI

- Cupric Canyon's Zone 5 under construction
- Sandfire updating T3 FS and reserves by Q220



CORPORATE OVERVIEW ASX:KMT

CAPITAL STRUCTURE

SHARES ON ISSUE (M)	642.6
----------------------------	-------

MARKET CAP (A\$M) (at A\$0.004)	2.6
---	-----

CASH (A\$M) (Approx. as at Sept 30)	1.0
---	-----

DEBT (A\$M)	0
--------------------	---

ENTERPRISE VALUE (A\$M)	1.6
--------------------------------	-----

OPTIONS (M)	80 a,b,c,d
--------------------	------------

DIRECTORS & MANAGEMENT

PETER MEAGHER
NON-EXECUTIVE CHAIRMAN

SIMON JACKSON
MANAGING DIRECTOR

GRANT FERGUSON
NON-EXECUTIVE DIRECTOR

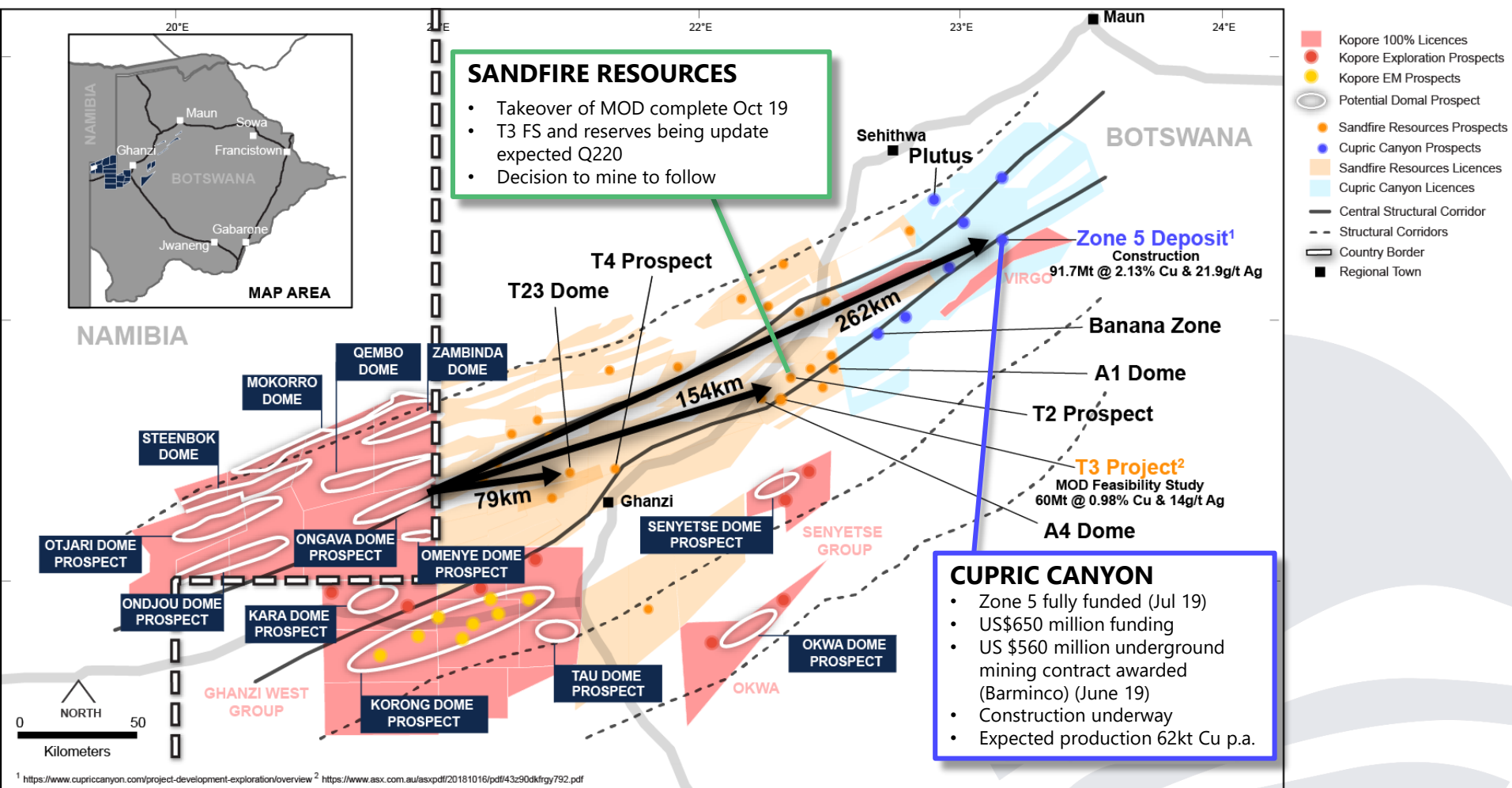
SHANNON COATES
NON-EXECUTIVE DIRECTOR

DAVID CATTERALL
EXPLORATION MANAGER

- a) 55m Options are exercisable at \$0.06 each, expiry 8 November 2020
b) 8,000,000 options exercisable at \$0.036/option, expiry 29 May 2024
c) 14,000,000 options exercisable at \$0.045/option, expiry 7 December 2023
d) 3,000,000 options exercisable at \$0.045/option, expiry 19 November 2023

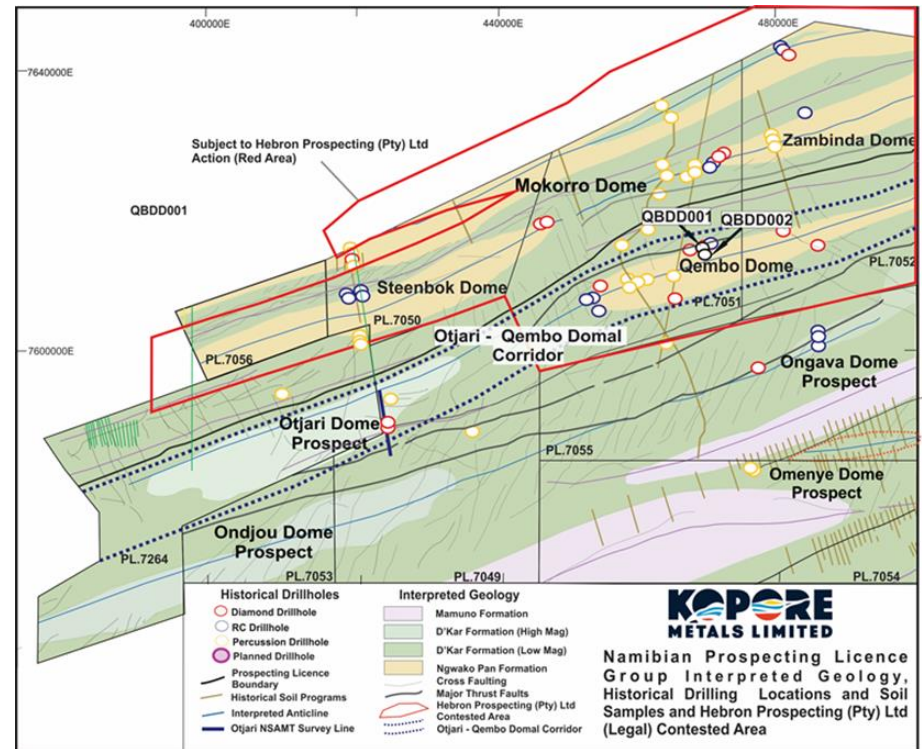
THE KALAHARI COPPER BELT

A globally significant & under-explored region



OTJARI/QEMBO CORRIDOR - NAMIBIA

- Corridor strike length 110km. Dome circumference approx. 95km each
- Sparse historical drilling identified multiple copper/silver intersections
- 2 shallow holes drilled by KMT at Qembo in Oct 19
- 2.07m @ 0.5% Cu & 66g/t Ag intersected 99m below surface, proximal to the D'kar/Ngwako pan contact
- 2 holes drilled by KMT at Otjari in Sept 19
- Traces of copper sulphides identified



Q1 2020 STRATEGY

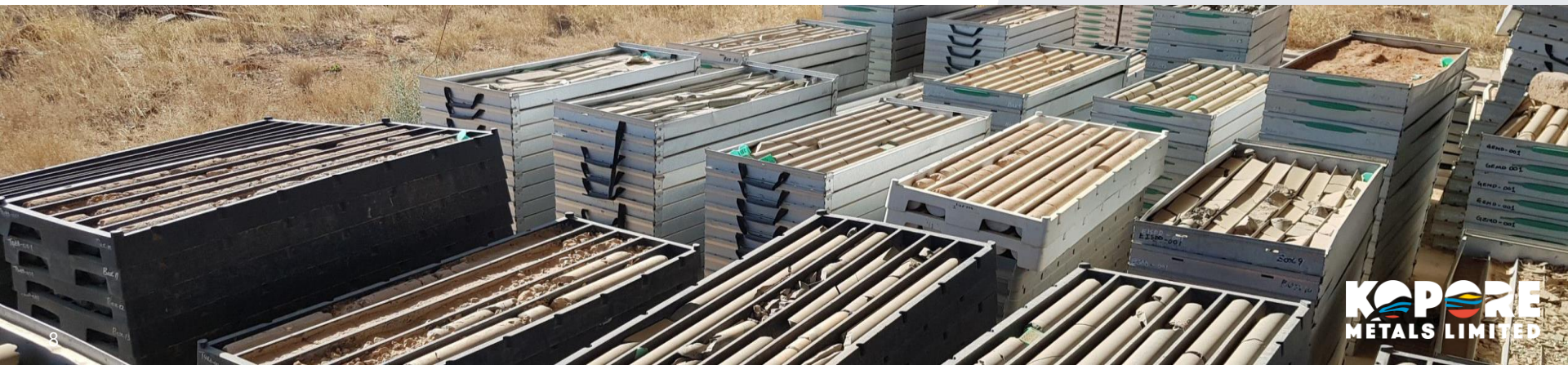
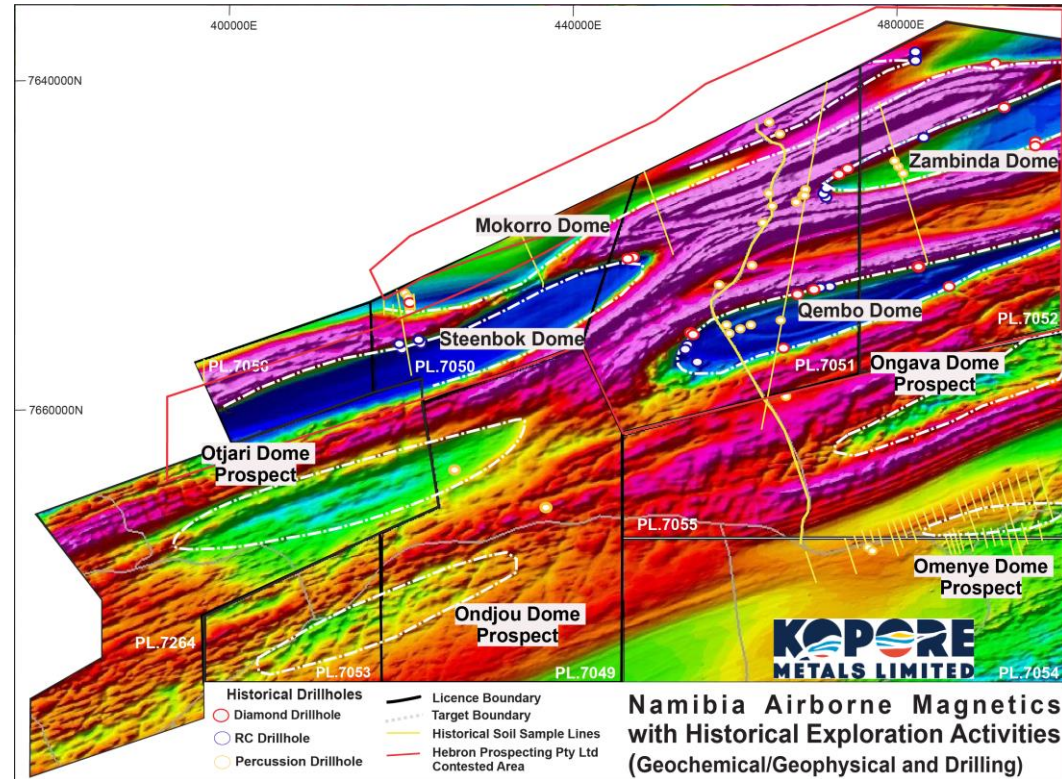
Beginning to Unlock Potential

PROJECT	DEC	JAN	FEB	MAR	ACTIVITY DESCRIPTION
NAMIBIA/BOTSWANA					
Airborne EM / MAG / Radiometric Survey Qembo Dome, Otjari, Ongava and Kara Domal Prospects					Airborne EM / Mag / Radiometric survey over highest priority targets. Targeting conductive shale units to assist in understanding structural setting and detailed drill targeting.
BOTSWANA					
Virgo Domal Prospect EMP					Granting of the Virgo PL135/2017 and PL162/2017 Environmental Management Plan (EMP)
Kara Domal Prospect – Drilling of Airborne EM / Mag / Radiometric Identified Targets					Drilling of potential identified targets based upon Q1 2020 Airborne EM program
NAMIBIA					
Airborne EM / Mag / Radiometric identified targets drilled Qembo Dome, Otjari and Ongava Domal Prospects					Drilling of potential identified targets based upon Q1 2020 Airborne EM program

NAMIBIA PROSPECTING PORTFOLIO

Identified Prospects

- Access to historical database (worth \$millions), including drill core
- Data acquisition and compilation of 79 historical holes ongoing.
- Reprocessed airborne geophysical data confirmed presence of four Cupric Canyon style domes and four potential subsurface "intact" domal structures similar to MOD Resources T3 deposit
- Multiple historic copper intersections require follow up
- New licence (PL7264) awarded May 2019 and EMP granted Sept 19



ONGAVA DOMAL PROSPECT - NAMIBIA

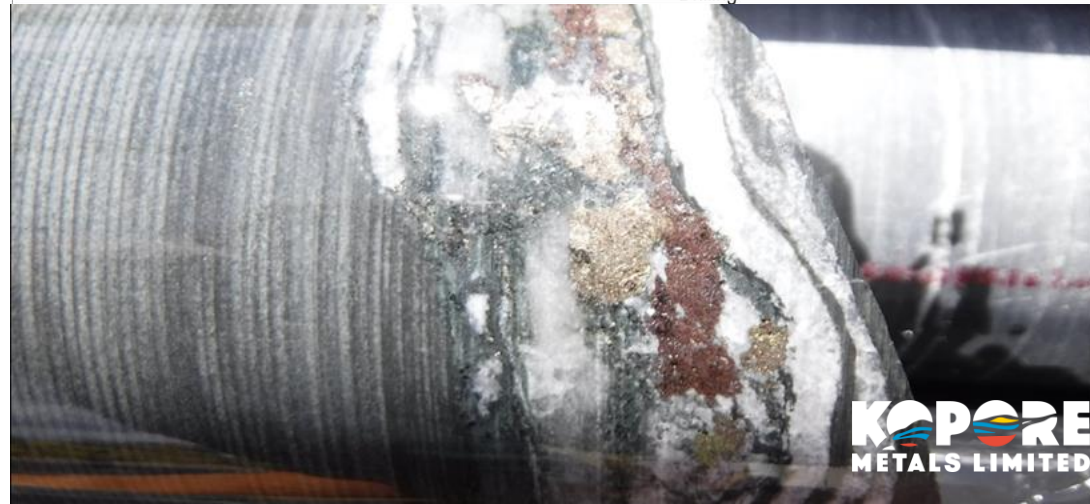
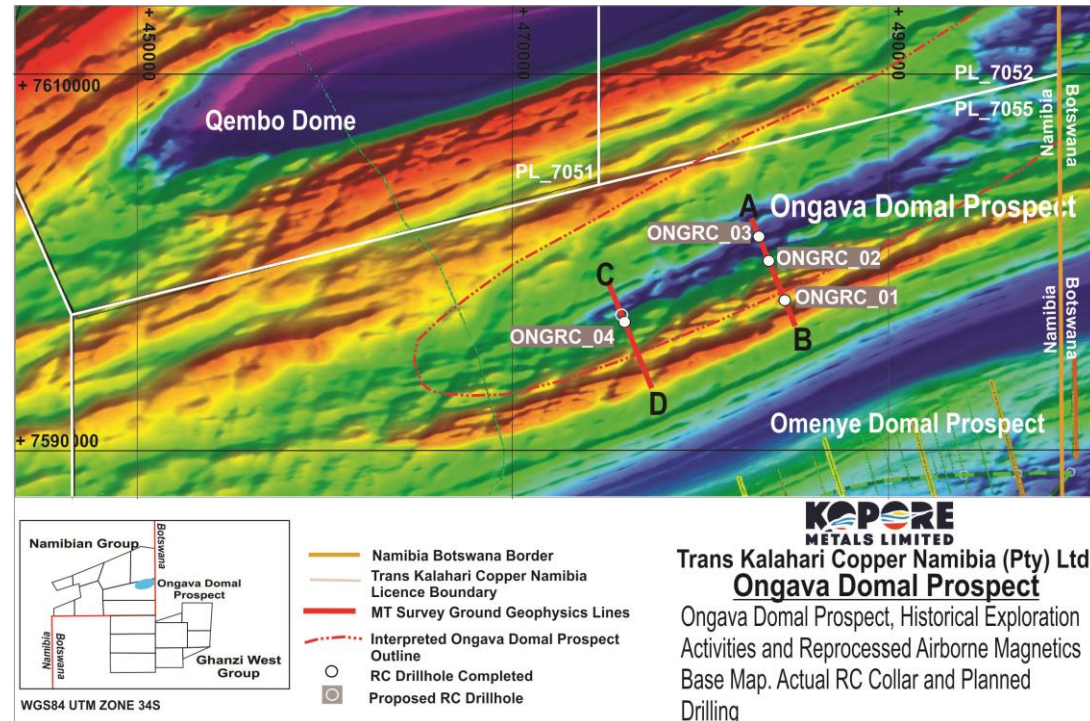
Exploration ongoing

PROJECT HIGHLIGHTS

- NSAMT ground geophysical survey has delineated an interpreted D'Kar/Ngwako Pan Formation contact position.
- Initial copper (chalcopyrite and bornite) intersections in first diamond drillhole at the Ongava project.
- Interpretation indicates Ongava dome becomes shallower to the East.
- Ongava Domal Prospect interpreted approximately 34km in strike length.

PLANNED ACTIVITIES

- Airborne EM/Magnetics and radiometrics survey
- Drill targets generated by airborne survey



KARA DOME – BOTSWANA

KARA PROJECT HIGHLIGHTS

- Kara Domal prospect is located with the central structural corridor known to host the majority of recent copper/silver discoveries on the Kalahari Copper Belt
- Pathfinder alteration and sulphide minerals observed in initial reconnaissance drilling program
- Identified structure and high calcareous sediments interpreted as important to potential mineralisation trap sites

PLANNED ACTIVITIES

- Airborne EM/Magnetics and radiometrics survey
- Drill targets generated by airborne survey



A GROWING DEFICIT IN A GROWING MARKET

“Copper is going to be central to the green revolution”

Charlie Durant, CRU analyst

ELECTRIC CARS SEEN DRIVING DEMAND - Roskill expects sales of electric vehicles powered by rechargeable lithium-ion batteries to rise to:

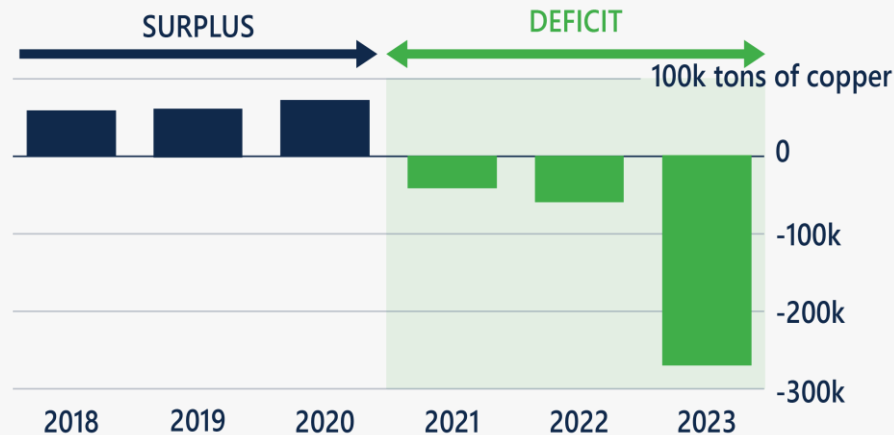
**17M units, or
20% in 2025**

**32M units, or
37% by 2030**

compared with
3%, or 2.1M units,
last year

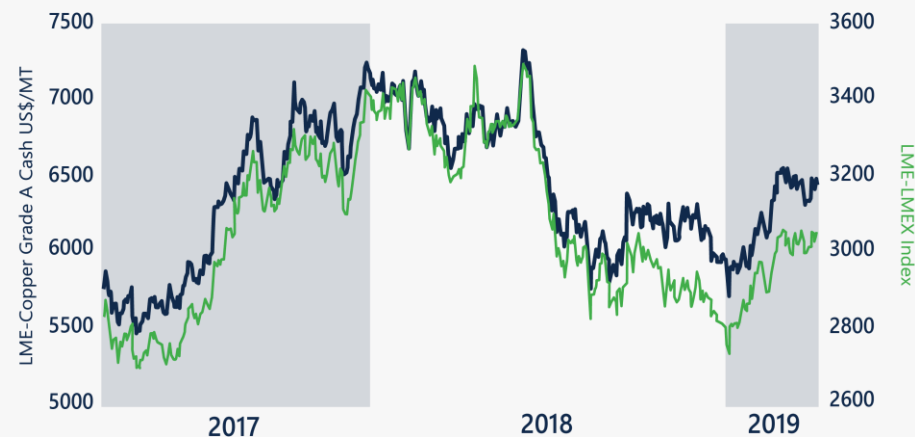
Source: Reuters 7 April 2019
Copper producers gather; electric cars seen driving demand growth

GROWING COPPER DEFICIT IN 2021



Source: CRU Group

LME Cash Copper vs LME Index



Source: Thomson Reuters Datastream

KOPORE'S ROAD TO COPPER

COPPER INTERCEPTED ON FOOTWALL CONTACT

DOMINANT DISTRICT SCALE LAND POSITION ON THE KALAHARI COPPER BELT

MULTIPLE COPPER SHOWINGS AND TARGETS

UNLOCKING THE CODE TO THE BELT

NAMIBIA AND BOTSWANA – STABLE AND SUPPORTIVE MINING JURISDICTIONS



The logo for Kopore Metals Limited features the company name in a bold, blue, sans-serif font. The word 'KOPORE' is on the top line, and 'METALS LIMITED' is on the bottom line. A stylized graphic of three wavy lines in blue, yellow, and red is positioned between the two words. To the right of the logo is a solid green square.

KOPORE
METALS LIMITED



koporemotals.com

info@koporemotals.com

Suite 5, 62 Ord Street
West Perth, WA 6005

TEL: +61 8 9322 1587
FAX: +61 8 9322 5230